



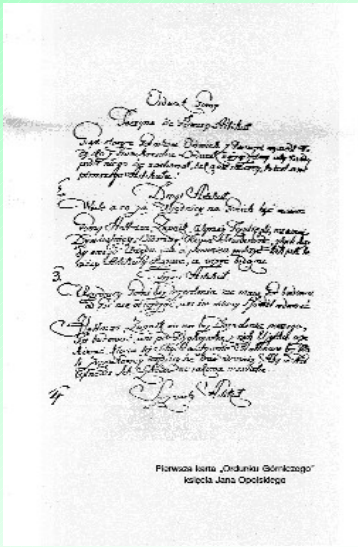
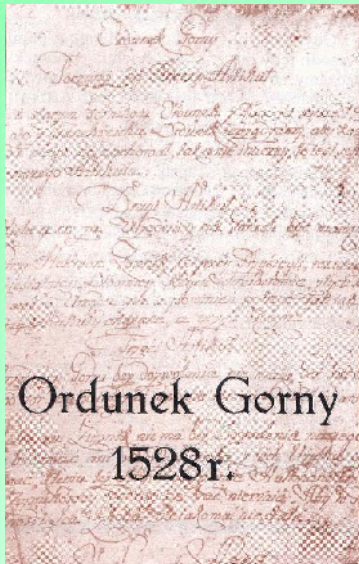
# *History of Mine Supervision on the Polish Lands*

# *Statutes of Casimir the Great*



*The earliest regulations on mine operation were introduced by Casimir the Great who, in 1368, laid down the principles of operation of the Salt Mine Wieliczka in a statute later referred to as Casimir's Statute.*

# ***The First Polish Mine Law***



***The first Polish mining law ("Ordunek Gorny") was laid down in 1528. It regulated organizational issues of mining for the Upper Silesia Region.***

*The first page of the "Ordunek Gorny"*

***This document is of great value for the Polish mining legislation.***

# *Mining Administration in the 16th Century*

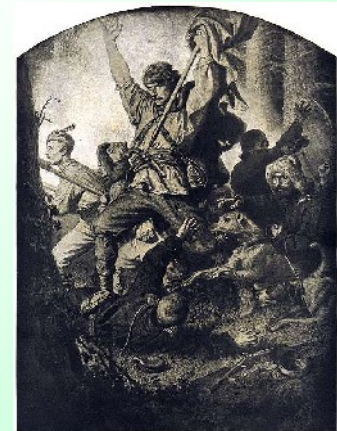
*From the end of the 15th century mine operations were supervised by the mining administration.*

*The administration prevented from wasteful exploitation of resources, supervised mine construction, exploitation, roof support, transportation, mine drainage and water management on the surface.*





# *Mine Administration in the Period of Partitions*



*In the period of partitions the development of coal mining appeared different in each sector, which was related to the economical and social conditions. The mine authorities had three-tiered structure in that period, i.e.:*

- 1. Local authorities*
- 2. Managements (Zarządy) - Russian sector, Mine Districts (Starostwa Górnicze) - Austrian sector, State Mining Authorities (Wyższe Urzędy Górnicze) - Prussian sector,*
- 3. Competent ministries*

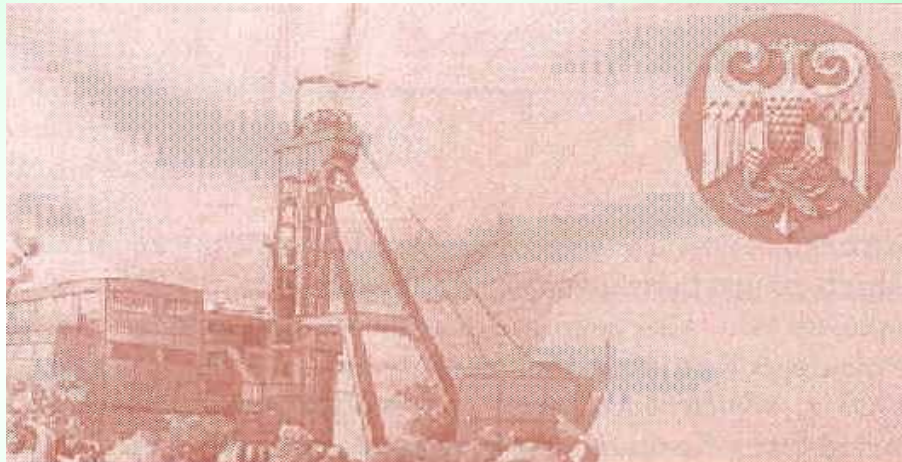
# *State Mining Authority in Silesia*

*The State Mining Authority was established in 1769. Its activities included:*

- *Technical and administrative supervision over mines*
- *Employment of mine's managerial staff*
- *Mine tax collection*
- *Division of profits*
- *Judiciary*
- *Supervision over vocational schools*

# ***Mining Authorities in the years 1918-1922***

***In 1918 three mining laws (as issued by the partitioners) were in force in Poland. In 1920 the section of mining and metallurgy was established in the Ministry of Industry and Trade. In 1922 mining administration was organized in the Upper Silesia Region.***





# *State Mining Authority in Katowice*

*On 24 June 1922, by the Ordinance of Council of Ministers, the State Mining Authority was established in Katowice. I was the first mining authority in the independent Polish state.*

DZIENNIK USTAW RZECZYPOSPOLITEJ POLSKIEJ.		
10 lipca	№ 50.	Rok 1922.
Treść: 441.	Ustawa z dnia 12 maja 1922 r. w przedmiocie ratyfikacji konwencji handlowej między Polską a Francją, podpisanej w Paryżu dnia 6 lutego 1922 r. . . . .	811
442.	Konwencja Handlowa między Polską a Francją . . . . .	811
443.	Oświadczenie Rządowe z dnia 27 czerwca 1922 r. w przedmiocie daty wejścia w życie Polsko-Francuskiej Konwencji Handlowej z dnia 6 lutego 1922 r. . . . .	825
444.	Rozporządzenie Rady Ministrów z dnia 24 czerwca 1922 r. w przedmiocie utworzenia Wyższego Urzędu Górniczego w Katowicach . . . . .	825
445.	Rozporządzenie Ministra Skarbu z dnia 19 czerwca 1922 r. w przedmiocie przekazania miejskiej komisji szacunkowej wymiaru państwowego podatku dochodowego na obszarze m. Łodzi. . . . .	826

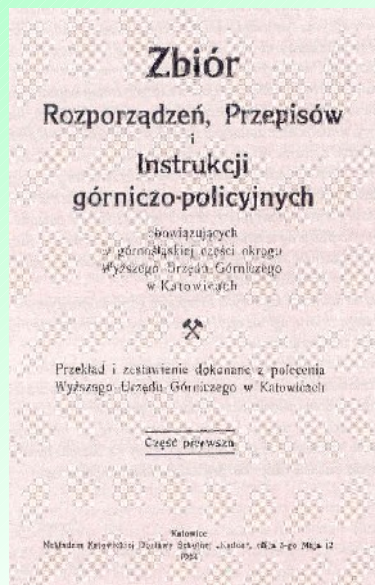


*Zygmunt Malewski was appointed as the first head of this new body.*



# *Ordinance on Safety in Mines*

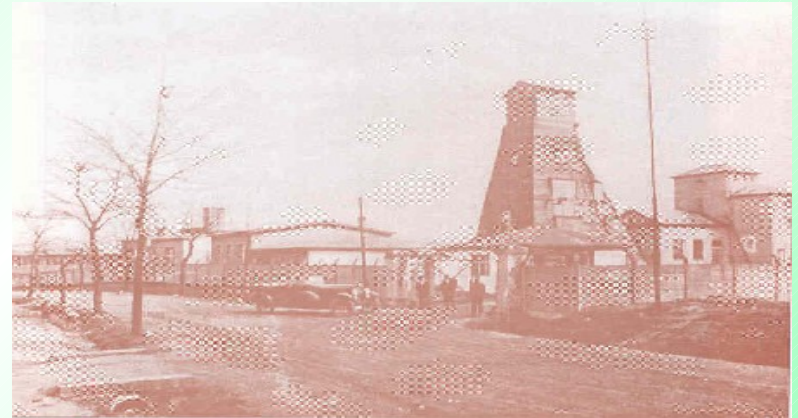
*The State Mining Authority appointed a commission to modernize, verify and up-to-date mining regulations that were binding in those days.*



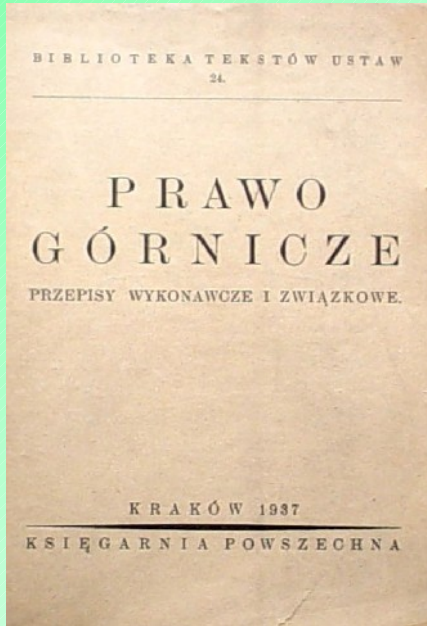
*The Ordinance on Safety in Mines, which was drafted by the commission and received opinion of the Ministry of Industry and Trade, came into force in 1923.*

# *Initiatives of the State Mining Authority*

*In 1924, on the initiative of the  
State Mining Authority, the  
Experimental Mine  
"Barbara" and Mine Rescue  
Centre were established.*

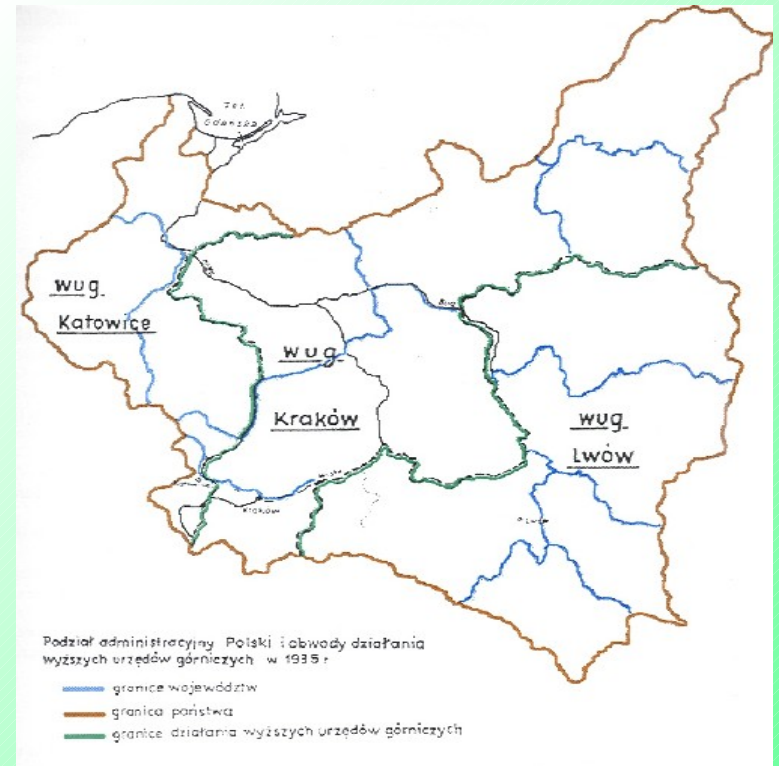


# *Mining Law*



*In 1930 the first Polish mining law was introduced by President's ordinance.*

*Then the territory of Poland was divided into mining districts. State mining authorities were established in Katowice, Krakow and Lvov.*



# *World War II*

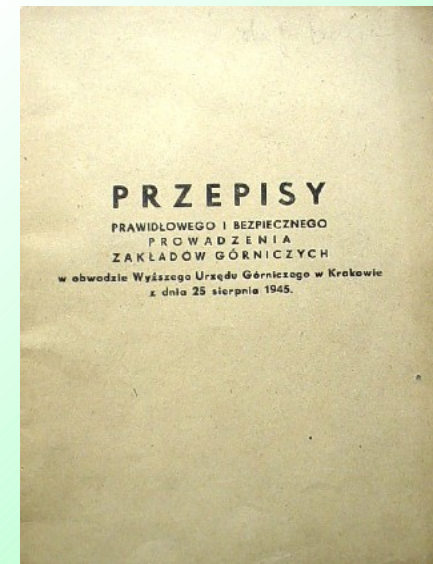
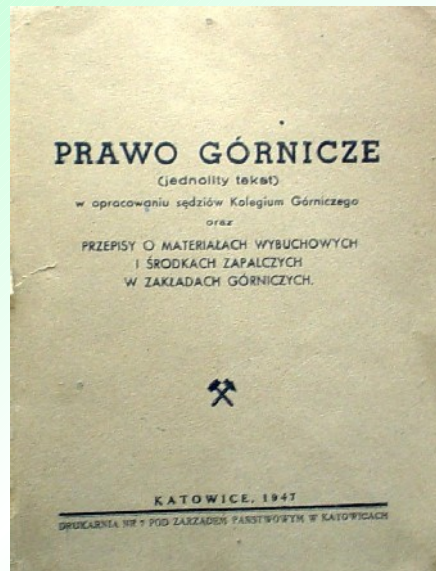
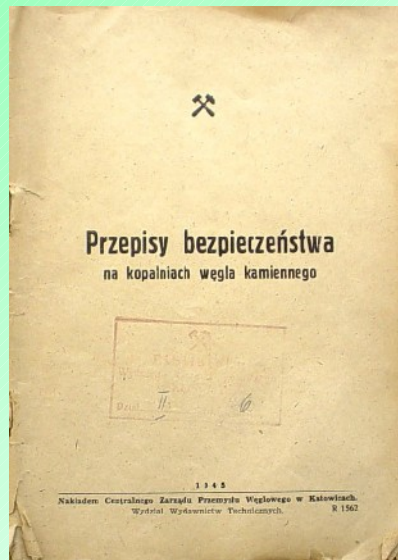


*In September 1939 Polish mining administration ceased to operate. Polish state mining authorities were replaced by German administration.*

*The territory of State Mining Authority in Lvov was taken over by Soviet administration.*



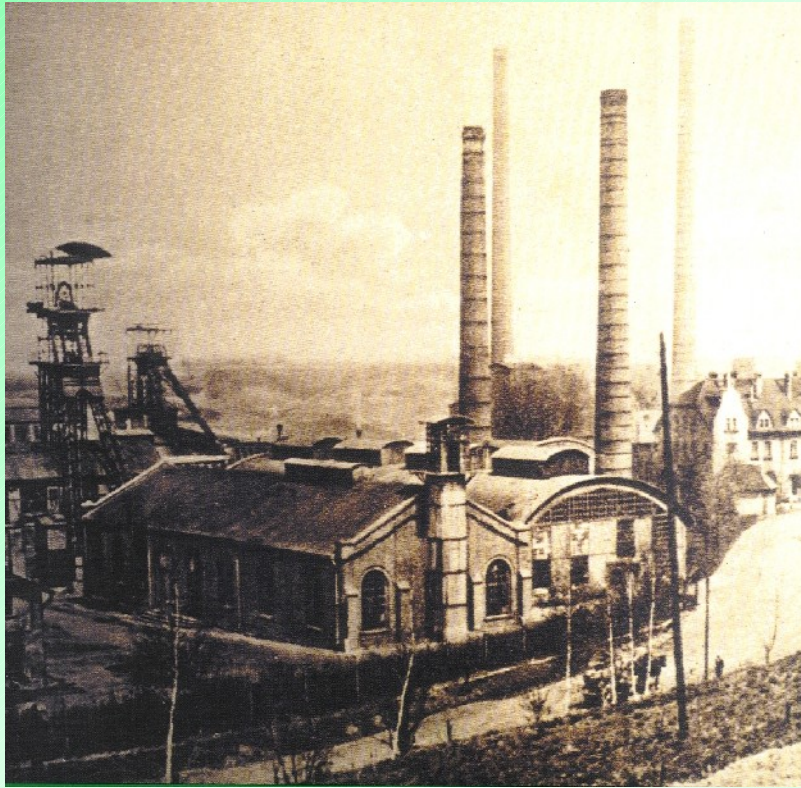
# ***Mining authorities' organization after WWII***



***The post-war ordinance of the Council of Ministers on seats  
and territorial competence of state mining authorities  
was issued on 18 July 1946.***

***Two state mining authorities were established in  
Katowice and in Krakow and 11 district mining offices.***

# *New Mining Law*



*New mining law was introduced by a decree of 6th May 1953. The law was reshaped according to new economical and political situation. The new law also implemented regulations on mine damage.*

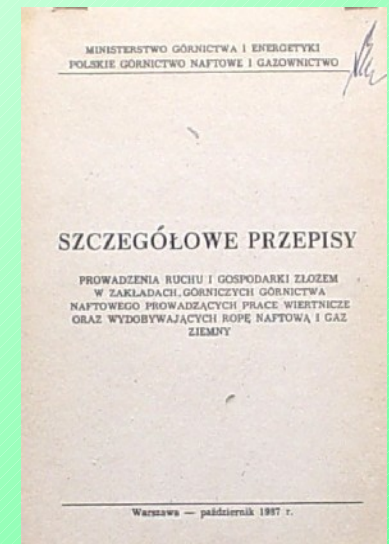
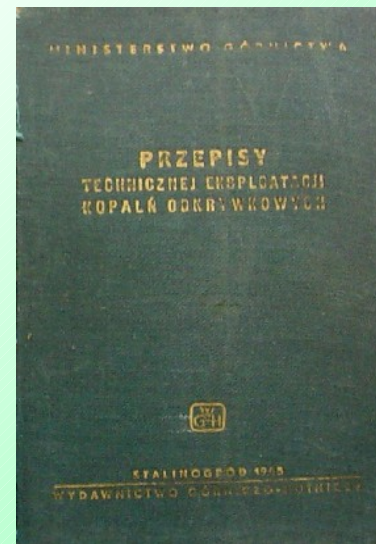
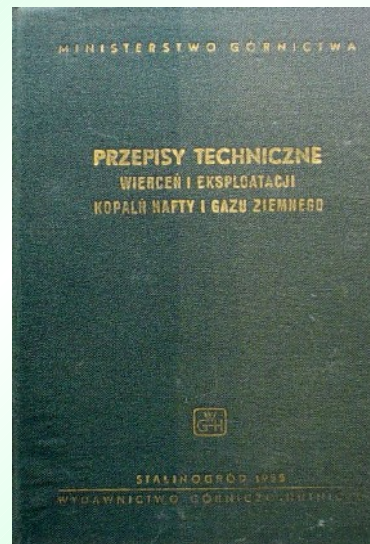
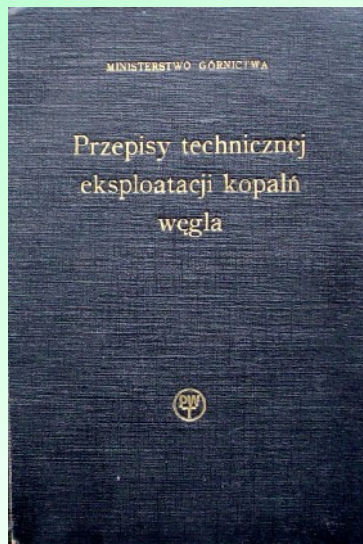
# *Decree on Mining Authorities*

*In 1954 Polish mining supervision entered a new stage. By a decree of 21 October the State Mining Authority in Katowice was reshaped into a central government's body that was subordinated to the Prime Minister.*



# *In the 50s...*

*Since 1954 mining authorities had been developing new methods of work. Substantial changes were introduced with regard to inspections in mines. In response to extensive legislative changes a „Collection of health and safety regulations” was issued in 1955.*





# *New Headquarters of the State Mining Authority*



*In 1965 the State Mining Authority was moved to a new address in Poniatowskiego Street in Katowice.*

# *Publications*

*In the years 1969-1989 the State Mining Authority published a quarterly "Work Safety in Mines".*

*In 1992 it was resumed under new title "Work Safety and Environmental Protection in Mines". It has been published as a monthly since then.*



# *Reform of Geological and Mining Law*

*In 1988, in order to adapt mining and geological regulations to the market economy, the President of the State Mining Authority created a commission for the reform of mining and geological laws.*

*The mining law was amended by the act of 9th March 1991.*





# *Geological and Mining Law*



*On 4th February 1994 the  
the bill of Geological and  
Mining Law  
was passed in the Sejm.*



*The State Mining Authority  
participated in creation of  
this law and executory  
regulations.*



# *Meetings of Mining Authorities and Administrations of European Countries*



*Every year the mining authorities' leaders meet in order to exchange experiences and solutions in the field of mining supervision. The first meeting was held in the Czech Republic in 1995. The 10th Meeting took place in Wroclaw in 2004.*

# *Commissions for Hazard Prevention*



## DZIENNIK URZĘDOWY

WYŻSZEGO URZĘDU GÓRNICZEGO

Katowice, dnia 21 stycznia 2004 r.

TREŚĆ:

Poz.:

### DECYZJE PREZESA WYŻSZEGO URZĘDU GÓRNICZEGO:

- 1 – nr 1 z dnia 2 stycznia 2004 r. w sprawie powołania Komisji do spraw Zagrożeń Atmosfery Kopalnianej i Klimatyzacji w Podziemnych Zakładach Górniczych . . . . . 1
- 2 – nr 2 z dnia 2 stycznia 2004 r. w sprawie powołania Komisji do spraw Tapań, Obudowy i Kierowania Stropem w Zakładach Górniczych Wydobywających Rudy Miedzi . . . . . 4
- 3 – nr 3 z dnia 2 stycznia 2004 r. w sprawie powołania Komisji do spraw Tapań w Zakładach Górniczych Wydobywających Węgiel Kamienny . . . . . 6
- 4 – nr 4 z dnia 2 stycznia 2004 r. w sprawie powołania Komisji do spraw Likwidacji Zakładów Górniczych i Gospodarki Odpadami . . . . . 8
- 5 – nr 5 z dnia 2 stycznia 2004 r. w sprawie powołania Komisji do spraw Zagrożeń Zdrowia Czynniki Środowiska Pracy w Zakładach Górniczych . . . . . 10
- 6 – nr 6 z dnia 2 stycznia 2004 r. w sprawie powołania Komisji do spraw Zagrożeń Wodnych . . . . .
- 7 – nr 7 z dnia 2 stycznia 2004 r. w sprawie powołania Komisji do spraw Obudów Wyrobisk Górniczych i Kierowania Stropem . . . . . 13
- nr 8 z dnia 2 stycznia 2004 r. w sprawie powołania Komisji do spraw Ochrony Powierzchni . . . . . 15
- nr 9 z dnia 2 stycznia 2004 r. w sprawie powołania Komisji do spraw Szkoleń w Górnictwie . . . . . 17
- nr 10 z dnia 2 stycznia 2004 r. w sprawie powołania Komisji Bezpieczeństwa i Higieny Pracy w urzędach górniczych . . . . . 19

*In 1996 the President of the State Mining Authority created the Commission for Work Safety in Mining.*

*Nowadays, there has been 10 commissions that give opinions and advice to the President of the State Mining Authority with respect to different mining hazards.*

# *Collecting Survey and Geological Data*

*The Centre of Survey and Geological Data of Liquidated  
Mining Plants was established in 1999.*



*Nowadays, under the name Archive of  
Mine Survey and Geological  
Documentation it performs tasks of  
technical assistance and advice to central  
and local administration, public  
institutions and to private persons or  
companies.*



# *Accession to the European Union*

*The State Mining Authority participated in the National Programme of Preparations for the Accession to the European Union.*



*The State Mining Authority made substantial efforts to implement this programme. Mining authorities run an information campaign in order to provide mining entrepreneurs and producers of mining equipment with relevant knowledge.*



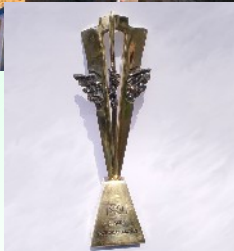


# *Quality Management in the State Mining Authority*



*State Mining Authority's services are  
subject of permanent improvement.  
It was confirmed by:*

- *Certificate of Quality System ISO 9001:2001.*



- *Silesian Quality Award.*